



2015 ANNUAL REPORT

INTRODUCTION

In 2015, after a long period of preparations and considerations, first child patients were admitted to our hospice. Not only was this decision dependent on the professional training of our team but also on careful deliberation as to how much this new service would burden our capacity in both medical and psychological terms. Being an experienced professional hospice worker does not equal being immune to the pain and sorrow this work involves. We are glad to have successfully taken care of the first six paediatric patients and, at the same time, increased our total capacity by 27 patients compared to last year.

Together with other mobile hospices and the Czech Society of Palliative Medicine (CSPM), Cesta domů has been trying to achieve a change in the way mobile palliative care is provided by making it a part of the public health insurance system. This long-term effort has intensified during the past two years. Thanks to the favourable situation in the Ministry of Health and the management of the VZP health insurance company, a pilot programme of covering the costs for mobile palliative care was launched on 1 April 2015. Its aim was to ascertain the possibilities and costs mobile hospices cover for taking care of dying patients in their home environment. The evaluation of the nearly year long operation of the pilot programme turned out unexpectedly well – all parties involved are satisfied with the results and so it was decided to continue with the existing system in 2016 as well. We hope that this year, mobile specialized care will be included in the reimbursement regulation of the largest Czech health insurance company. The persons insured as well as all providers of mobile palliative care, not only the seven organizations currently involved in the pilot programme, would benefit from it.

“We do not die the way we want to because we do not talk about it.” This was the slogan of an awareness campaign we organized in 2014 to prepare the ground for a public presentation of previously expressed wishes: an institute implemented in the Czech legal system, yet not in practice. This legal instrument makes it possible for patients to write down their wishes relating to quality of their lives and medical care in case they are no longer able to decide for themselves. This issue came into the focus of our education and awareness raising efforts. We organized courses for the public, conferences for professionals and had a sociological research carried out among doctors on their experience in planning care with their patients. We published a translation of the American physician Angelo Volandes’ book *The Conversation* (Umění rozhovoru o konci života) which shows how important it is for patients, their loved ones and doctors to have an earnest conversation on the end of life.

Marek Uhlíř, Director

CESTA DOMŮ AND ITS MISSION

Cesta domů is a non-profit organization; its mobile hospice services enable home care for the terminally ill and dying patients and offer support to their families.

The organization also tries to contribute to social and legislative changes that are necessary for improving care for dying people. Cesta domů offers educational activities, runs several web portals, and has its own publishing house and a specialized library.

Together we share and publicly work to support the acceptance of the fact that dying is an important part of life.



Cesta domů makes it possible to take care of the terminally ill and dying in their home environment and provides support to their loved ones.

WHAT WAS ACHIEVED (BY US) IN PALLIATIVE CARE IN 2015

- Together with six mobile hospices, we became part of a VZP health insurance company's pilot programme. Its aim was to monitor the volume of care provided to dying patients in their home environment and compare it to the costs insurance companies cover for patients in hospitals, nursing homes, long-time care facilities and at home in the care of GPs and home care agencies. The very fact that the terms and conditions of the programme were successfully negotiated and the programme was launched is a great success for us. At the end of 2015, all parties involved were satisfied with the results of the programme and so it was decided to

carry on with it – hopefully until palliative care is included in the list of performances and the reimbursement regulation.

- Engaged in research, education and awareness activities, the Palliative Care Centre (the establishment of which we supported in 2014) celebrated the first full calendar year of its existence. In 2015, the Centre compiled an anthology of texts dealing with mobile specialized care in Europe.
- New mobile hospices were established in Nový Jičín, Znojmo, Plzeň and Tachov. We provided them with guidance and were enthused by the energy and courage they got down to work with.
- We had a sociological research among doctors carried out on their experience in planning care with their patients (the so-called previously expressed wishes). The results were published on data.umirani.cz. The research was conducted within the project “Víc hlav víc ví” (Two heads are better than one) supported by the Swiss-Czech Cooperation Programme through a grant from the Ministry of Health of the Czech Republic.
- We established cooperation with the Czech regional office of the World Health Organization. Our proposal to highlight the issue of palliative care became one of the priorities of a two-year contract concluded between the Czech Republic and the WHO.
- Institute of Health Information and Statistics of the Czech Republic set up and published a national database for palliative care that draws on death certificates and the National Register of Hospitalized Patients and supports further research in this field.
- Jindřiška Prokopová, head of the Cesta domů support team, took part in consultations on legislative changes concerning care contributions.

MOBILE SPECIALIZED PALLIATIVE CARE

We provide palliative care to the terminally ill who wish to spend the last days of their lives at home with their families. Without the home care hospice services, most of our patients would have to be in hospital. Some of them would spend their final days on an intensive care unit hospital bed. They would lose touch with the outside world and family life, a vital condition for them to make the last arrangements.

Our home care hospice comprises six interlinked services of direct care: a medical team, counselling, respite, support, volunteers, and medical equipment rental.

Offering specialized palliative care, the home care hospice not only looks after the physical condition of its patients but also after their mental health and spiritual needs.

Equal attention is paid to the needs of the caregivers who face a challenging period and see their lives changing completely.

The needs of the ill and their families is taken care of by a multidisciplinary team made up of medical staff, social workers, respite services assistant, psychotherapists, volunteers and a chaplain.

Medical services

In 2015, we provided care to 217 patients, 80% of whom died in our care. Most of the others were offered an alternative solution. The number of patients admitted to our hospice has almost doubled during the past five years (in 2011, we had 112 people in our care). An average patient spent 30 days in our care (median 15 days). Our medical team made a total of 3,580 visits to patient homes, while 2,421 visits were made by the respite services assistants.

In line with our efforts to find an efficient model of care for terminally ill geriatric patients (admission for one month with the possibility of re-admission and one-time consulting visits), the percentage of oncological patients slightly declined from 81% in 2014 to 78.4% in 2015.

The medical team of Cesta domů, comprised of 3 staff members, 11 external physicians and 7 nurses, is led by senior consultant Irena Závadová.

Martina Pojarová is in charge of direct care services.

AVAST Endowment Fund is the general partner of our medical team.

Child Patients

A long period of preparations of our whole team preceded the extension of home care hospice services to child patients, a service we decided to offer in 2014. Our medical staff did internships in the mobile hospice Ondrášek in Ostrava. We established cooperation with the mobile hospice Plamienok and with the paediatric oncology clinic in the Motol University Hospital in Prague. Two external paediatricians joined our team. The first child patient was admitted after returning from the Congress on Paediatric Palliative Care in Rome at the end of 2014. In 2015, we took care of six child patients in the terminal stages of their illnesses whose families wanted to care for them at home. Gradually, we managed to find a model of care that includes support for the entire family and the patient. Thanks to this and two cooperating psychologists, families of child and adult patients could be offered bereavement support.

Shared care

In 2015, we continued to search for an optimal model of shared palliative care in retirement homes. During the first quarter of the year, we took care of two clients in the retirement home of the Social Services Centre Prague 2. We also provided palliative care to eight clients in the Sue Ryder Home and one client in the retirement home of Prague 9. That means that almost 5% of our patients were taken care of in cooperation with the staff of one of the cooperating retirement homes. We are trying to build on this experience by cooperating on developing a methodology of shared care within the Sue Ryder Home project: “Process of integrating palliative care in retirement homes”.

We provide palliative care to people in their final days. In 2015, we provided this care to 217 patients including 6 children.

We made a total of 3,580 visits to patient homes, spending an average of 30 days with each of them.

Respite Services

“I would love to thank for Mr. Tomáš. I remember how hesitant you were about who to send to us. And then you said you would send a nice young man my husband would get along well with. You have no idea how good this choice was. Thanks to his empathy and kindness, my husband had someone to talk to for nearly a year, even though it was more and more difficult. He was always looking forward to seeing him.”

(From a letter by Mrs. H., whose husband was a client of our respite services due to an advanced stage of Alzheimer's disease.)

Patients admitted to our home care hospice usually have weeks to live. The terminally ill we provide respite services to could, however, have a longer expectancy – as was the case with Mr. H. Respite services assistants replace family members as caregivers at prearranged intervals.

In 2015, these services were used by 56 people, 25 of whom were clients of our home care hospice at the same time. The assistants spent a total of 6,093 hours with the patients. Building on the experience of our respite services team, we wrote a manual for long-term caregivers called *Průvodce domácí péčí* (Home Care Guide) which serves our clients as well as the clients of our partner organisations.

Our Respite Services team is managed by Karolína Pochmanová and consists of nine assistants.

Advisory Centre

The Advisory Centre of Cesta domů provides specialized professional counselling to people across the Czech Republic all year round, 32 hours a week. It helps families taking care of an ill person at home or looking for an alternative solution. It also provides assistance in crisis situations related to serious illness or death. The Advisory Centre also serves as a gateway to the services Cesta domů provides – social workers receive requests for care in person and by telephone. The Advisory Centre of Cesta domů received 11% more requests than in the previous year, also due to the extended hours of operation.

Online Advisory Centre

As part of our advisory services, the online consulting centre serves people throughout the Czech Republic who can consult with a doctor, a social worker, or a psychotherapist. Their answers are available online on the counselling portal Umírání.cz within six days after the query is raised. Last year, 269 people made use of the online consulting service.

The Cesta domů Advisory Centre for the terminally ill and their caregivers is a unique service listed by the Ministry of Labour and Social Affairs of the Czech Republic as a part of the social services network with national and supra-regional significance.

The Advisory Centre is managed by Olga Stránská and a team of five social workers.

Support Services

Palliative care has a multidisciplinary nature which is why medical services need to work hand in hand with a support team providing psychosocial, therapeutic and spiritual

support to dying people and their families. The psychological and psychotherapeutic role of our team took on a new significance with the decision to admit child patients.

The support team provides care to ill people, their caregivers and the bereaved in the form of social and spiritual support as well as therapeutic sessions, both in clients' homes and on the premises of Cesta domů. In 2015, the number of visits to families increased by 30%. Individual support comprises ten therapeutic sessions and is offered to families while care is provided and to the bereaved within 13 months after a client's death. Further sessions are possible upon client's request for a fee. The support team also organize guided self-help sessions of the Podvečer Club which is open to all bereaved, not only to families of our patients.

This team, comprised of two psychosocial workers, two child psychologists, a psychotherapist and a chaplain, is led by Jindřiška Prokopová.

Rental Service

We provide compensatory aids that facilitate long-term home care (adjustable beds, antidecubitis mattresses, walkers, oxygen concentrators, etc.). These aids are used when working with home care hospice clients and are also available to general public for a fee. Last year, public interest increased (30 more contracts were concluded compared to 2014). In 2015, the rental was led by Anežka Moravcová.



In 2015, we increased our total capacity by 27 patients compared to last year.

VOLUNTEERING

On that October evening, I found myself hovering in front of the house. I didn't want to be late on my first visit and so I arrived fifteen minutes earlier, struggling with anxiety... Líba's tumour was around the aorta which could rupture any time. What would I do if it happened tonight? But it didn't. And Hanka, Líba's daughter, enjoyed a good night's sleep after many restless nights.

(Juliána Bindášová, coordinator of volunteers and advisory centre assistant at Cesta domů)

They have their families, friends, households, jobs and hobbies. Despite that, the volunteers completed 5,451 hours helping with direct care, medical equipment rental, administration, charity shops and fundraising events. They organized, for example, a running event for Cesta domů at the Birell Prague Grand Prix 2015 and took part in the editing process of a new version of the online counselling portal Umírání.cz.

Volunteers also continue to play an irreplaceable role in our patients' families, helping with both day and night care. They constitute an important part in the caretaking process, which is why we invited them to a broader participation in the team interventions with individual patients. We also introduced professionally guided supervisions for our volunteers (five times a year).

In 2015, we adjusted the basic volunteer training. Aiming to select the most suitable candidates in terms of the conditions and requirements volunteering at Cesta domů involves, a two-round selection procedure is now organized before the training starts. Only selected candidates receive this basic volunteer training. It now takes half of the original time to complete the course while keeping the same number of lessons. We are very happy about every new volunteer at Cesta domů.

CESTA DOMŮ IN THE MEDIA

- Czech Television reserved one episode of the series Klíč for a documentary about the translator Dana Gálová who died in our care.
- TV Nova aired a twenty-minute broadcast about Cesta domů and our child patient Alex.
- Hospodářské noviny published a spread on home hospice care. Orientace, a supplement of Lidové noviny, printed a special themed issue. The topic also appeared on a front page of MF DNES. A report on the activities of Cesta domů featured in two editions of the Czech Television prime time news.
- The Stream.cz television aired the story of our child patient Mája in its programme called Dělníci smrti (Workers of Death).
- The Respekt magazine published two of our extensive articles (on men's grief and on pain treatment) as well as an interview with our patient Dana Gálová.
- DVTV, an internet television station, aired an interview with our senior consultant Irena Zavadová and director Marek Uhlíř.

LIBRARY

The Cesta domů Library is the only public library in the Czech Republic specialising in palliative and hospice care. Its collection contains Czech and foreign titles, some of them unavailable elsewhere. The library helps experts and students dealing with palliative care as well as the layman public interested in leaving, accompaniment, death and bereavement. All titles of our publishing house are also available in the library. Its collection contains a total of 3,800 documents, 296 of which were acquired in 2015 at a price of just under CZK 90,000. 217 of them were donated to us, 79 bought. Readers borrowed a total of 4,128 documents in the last year. Managed by Ludmila Nohýnková, the library is located at Boleslavská Street 16, Prague 3 and open from Tuesday till Thursday (also for study purposes).

PUBLIC RELATIONS

Our work in families gives us the privilege of being part of their family stories and helps us establish close ties with people living in our city. We do not want to forget about those whom we do not meet personally – we want to approach them, know their opinions and provide them with information. To meet people “from outside” we are using our web portals, social networks, media, cultural and fundraising events. Former reporter of the Respekt magazine and a grantee of the Vodafone Czech Republic foundation, Ondřej Nezbeda helped us invaluablely with online and media presentation in 2015.

Ondřej Nezbeda was in charge of public relations and editorial work. Apart from that, he also participated in direct care as a respite services assistant. Under Ondřej’s leadership, media support for Cesta domů got to a level that far exceeded our expectations, improving cooperation with donors and fundraising instruments, and causing an increase in the number of members of our Club of Supporters. Thanks to our media image, we were much better positioned for negotiations with the authorities and politicians.

Umírání.cz

Every day, the web portal Umírání.cz buzzes with an intense activity of readers, searching for information on care for the terminally ill. For a long time, we were worried that despite the necessity and quality of the information provided, the way the information is presented makes reading of the texts rather complicated. That is why we decided to redesign the whole portal, making the arrangement of the informative texts more transparent and enlarging the font to make them easier to read. We created a directory of services available in the Czech Republic with a map where you can easily locate services provided in your area. We tried to underline the importance of the online consulting service and make searching among the already answered questions easier. We also removed certain features that were either insufficiently used or available elsewhere. We retained the news feature – apart from advice and information on how to care for dying people, there is a regularly updated section with interviews, reports and stories from the area of palliative care. Except for the graphics, the website was completely redesigned by

us – 150 out of a total of 600 working hours were completed by our volunteers. We believe this important source of information for the public now fulfils its purpose even better than it used to.

Facebook

During the past years, Facebook has become one of our main communication channels with the Czech public. On Facebook, we are able to get closer to people far beyond the radius of our physical life in Prague. The way we communicate has nothing to do with the superficiality and emptiness Facebook is often accused of. Our readers are interested in our posts, respond to them and share the news from the world of palliative care. They are not afraid – it might very well be that an open social network such as Facebook gives them the courage to talk about these issues. An interview with Petr Kamberský on how he coped with his father's death had the highest number of hits. The follower count went up from 4,590 at the beginning of January to 6,672 at the end of the year. The posts are usually seen by thousands of people.

Happy End

“It is a story about a dispute between a patient who knows what she wants (or what she doesn't want) and a doctor who feels responsible for the decisions his patient makes... Every time patients want to have something done or to decide something, they are seen as troublemakers. The story builds up to a powerful climax, a scene in which the doctor finally realizes that the protagonist may not fully understand the medical nature of her disease but she certainly understands her life, her values and attitudes and that it's only right to respect that.”

(Irena Závadová in an interview on the play *Happy End*)

Discovered by Cesta domů on an internship in an Israeli hospice facility, the play *Happy End*, directed by Arnošt Goldflam, premiered on 28 March 2015 in the Rokoko theatre. We hope this play will be received positively with the Czech audience.

Fundraising Auction

The annual fundraising auction held in November is always a key event for us. The proceeds, last year amounting to CZK 1,334,700, constitute a substantial part of our budget. Organizing the auction keeps us busy from spring and subsequent sales continue several months after the item is awarded to the highest bidder. But it is worth it. And not just for the incredible final amount of proceeds but also because it brings us together with many people from different fields who share a love for the fine arts and a respect for dying with dignity. In 2015, the auction took place in the Prague Crossroads, a unique venue run by the VIZE 97 foundation.

Meeting with Donors and Sympathizers

Every year, we organize two big social events and invite our sympathizers to take part. Thanks to the generosity of the Prague Steamboat Company, we went on a spring cruise on the Vltava river aboard the steamboat Vyšehrad. Young musicians of the Prague Cello

Quartet and the popular Pohřební kapela (Funeral Band) livened up the evening with their music. On the occasion of the World Hospice Day in autumn, Dan Bárta and the Robert Balzar Trio performed for us in the La Fabrika cultural centre. In spring and in autumn, we open the doors of our offices to the public, providing an opportunity to see our premises and meet our direct care assistants as well as administrative and project management teams.

Public events in 2015 were organized by Vojtěch Kozlík. Media image and editorial work was managed by Ondřej Nezbeda.

EDUCATION

Despite the continued expansion of our capacity, we were again unable to satisfy the high demand for our services. We are not happy about having to turn down clients from outside of Prague. That is why we pay much attention to the training of experts in palliative care and support all entities from state and private sector that increase the supply of (mobile) specialized palliative care. Last year, there were more than 50 educational events for the expert and layman public in a total volume of 242 lessons given by the employees of Cesta domů with an immediate impact on nearly 1,000 people, including many doctors. We organized, among other events, two educational days where we showed everyone who was interested the way our organization works and the services it offers (41 participants). We also offered one-day and multi-day courses for individuals and groups (21 participants). In spring and in autumn we helped organize and lecture two postgraduate courses for health professionals and caregivers for the dying (49 participants took part in the ELNEC course). 230 physicians attended a total of seven lectures on palliative care, previously expressed wishes, delivering bad news, ethical dilemmas of home care and cardiologic palliative care given by the senior consultant Irena Závadová at the Institute for Postgraduate Medical Education.

Advance healthcare directive

“A patient in the final stage of cancer refuses being resuscitated or transported to a medical facility in case they lose consciousness and have a blood circulation failure because they want to die at home surrounded by their loved ones and not in hospital.”

(From an interview with the lawyer Helena Krejčířová published on Umírání.cz.)

As for awareness raising activities, the institute of advance healthcare directive was the central theme of 2015, following the 2014 campaign Mojesmrt.cz which earned us a nomination for the Křišťálová lupa award in the category of public utility services. advance healthcare directives make sense in palliative care – they allow people to choose the way they will be treated in case they are no longer able to decide for themselves. In an ideal situation, patients should formulate a plan of care with their physicians and make a statement on the quality of life in case they lose consciousness or suffer from advanced Alzheimer's disease.

advance healthcare directives are still in their infancy in the Czech Republic. Few patients are aware of their existence and there is no case law that would make this legal instrument part of medical practice, bringing physicians reassurance that they may follow their patients' wishes.



Cesta domů places emphasis on the training of experts in palliative care and supports all entities from state and private sector that increase the supply of services in this field.

FINANCE AND FUNDRAISING

Our budget is made up of donations from individual and business donors, state budget subsidies, grants from foundations and endowment funds and income from our own activities and fundraising events. Thanks to the growing support of our donors, we are able to satisfy even more people asking for our services. We appreciate every single donation and the mutual trust we developed with our donors.

It makes us feel grateful and obliged. We are happy about the rising number of private donors in the Czech Republic who become an ever more significant support of non-profit organizations. At the same time, we are aware of the need to develop and cultivate this area, which is why we decided to follow Fairaising, an ethical code for fundraisers. These fundraisers us make a public commitment to respect all its provisions and contribute to the cultivation of professional philanthropy in the Czech Republic. We also established cooperation with Jana Ledvinová of the Czech Fundraising Center who helps us develop and increase the efficiency of our internal fundraising strategies.

Donors of Cesta domů

We survived last year thanks to “good old” partnership but also thanks to the new ones. Alza.cz continues to generously support Cesta domů in many ways. That is why we

nominated this company for the VIA BONA philanthropy award. We established cooperation with the law firm bnt attorneys-at-law that decided to provide us with legal services pro bono. We joined the project Běž pro dobrou věc (Run for a Good Cause) of the Prague International Marathon and ten runners with a starting number from Cesta domů participated in the autumn run Birell Prague Grand Prix 2015. The company eNovation collected money during their fundraising breakfast, doubled it and handed us a cheque for CZK 33,000. Our donors organize birthday parties, auctions, theatre performances and donate the proceeds to Cesta domů. Generosity and creativity our sponsors show is extraordinary. We are sorry we cannot mention everyone by name. We chose just a few of them. Please pay attention to the list of our donors on the last page of this Annual Report. Our thanks also go to the governmental and nongovernmental entities that support the development of palliative care and our activities within their grant programs. We would like to thank all our donors!

226 new supporters joined our Club of Supporters, a 74% increase in the total number of members.

The members include individual and corporate donors who gave us a total of CZK 1.6 million.

Online Fundraising

Last year, we paid special attention to online fundraising activities. Updating our online calendar available at kalendar.cestadomu.cz was one of the major achievements in this regard. We retained the possibility of supporting one day of the home care hospice operation but changed the concept of the website and its visual appearance. With the new message, “Every day counts. Please support a day of work in Cesta domů. One day, someone might support yours”, a total of 198 days were supported with an amount of CZK 495,000. That makes it 60 days more than last year. We could finally fulfil the wish of our donors for credit card payment, making the GoPay payment gateway an integral part of our website www.cestadomu.cz. In 2016, we plan to redesign this website with a strong emphasis on increasing comprehensibility for our clients and donors.

Club of Supporters

Becoming a member of our Club of Supporters is the easiest way to help. Last year, the club experienced a significant, 74% membership increase with 226 new members. Much of this success lies in the invitation flyers we inserted in spring and autumn issues of the *Respekt* magazine. An average member makes a monthly contribution of CZK 312. The members include private and corporate donors and their aggregate contributions to Cesta domů in 2015 amounted to CZK 1.6 million, which represents 6% of the total budget. This incredible amount is proof that even small contributions can accomplish great things.

Fundraising at Cesta domů is managed by Helena Štohanzlová, the finance department by Tomáš Matocha.

CHARITY SHOPS AND PUBLISHING

Charity Shops

The majority of products sold in our charity shops consists of second-hand goods. The rest comes from our own production (books, stationery) and includes handicraft and handmade products. The JAKPAK second-hand shop has a 50% share of all charity shops sales. Due to a surplus of used clothes, we decided to organize a spring and an autumn charity shop in Café Jedna in the National Gallery headquarters in Prague, earning a total of CZK 120,000. Unsold second-hand clothes go to the sheltered workshops of Diakonie Broumov where they are processed and given to the needy.

Charity shops are managed by our volunteers who also help us with most of our events, even outside their regular working hours. Some of them organize their own sales events, thus widening the range of people interested in the activities of Cesta domů. In 2015, 27 volunteers completed a total of over 2,000 hours working for the charity shops. We also managed to set up a second charity shop in Prague 6.

Publishing House

“We are working on books for professionals, on a book for older children and a book about grief for teenagers. But the main emphasis lies on books for families with small children which we consider very promising. It’s in our best interest to teach children that death is a part of our lives and that it’s good to help each other when it’s near... After all, it’s our children who might once take care of us...or not.”

(From an interview with Martina Špinková, chief editor of the Cesta domů publishing house, for www.h70.cz)

The publishing house of Cesta domů publishes literature on dying, death and care for our loved ones. In 2015, 20 titles including books, flyers, booklets and several dozen occasional prints were published. The publishing house focuses on professionals and caregivers but also pays attention to child literature. Children are not afraid to think and talk about death. Children’s books give them an opportunity to explore this topic with their families. We developed relationships with well-known children’s authors (Arnošt Goldflam, Marka Míková) and expanded the ranks of illustrators. We established cooperation with the largest Czech distributor (Kosmas), selling 17 publications through it. We also published our first e-book and participated in almost forty presentation and sales events such as book fairs, design and farmers’ markets, concerts and theatre performances, professional forums.

The most important achievement was the publication of Angelo Volandes’ book *The Conversation*, where this American physician demonstrates, through the stories of seven of his patients at the end of their lives, that what people need is not state-of-the-art medical technologies but one simple thing – a conversation.

The publishing activities and the charity shops are run by the service company ProCestu s.r.o, founded in 2014 for these two socially significant agendas and solely owned by

Cesta domů. Vojtěch Kozlík is managing director of ProCestu s.r.o., Tereza Špinková manages the charity shops and Martina Špinková is chief editor of the publishing house. The financial results in the Annual Report and the auditor's opinion only concern the activities of Cesta domů. The financial statement of the service organization ProCestu s.r.o. is available at www.cestadomu.cz.

OUR FUTURE

A vital moment in the further development of mobile specialized palliative care in the Czech Republic lies ahead in 2016: the completion and evaluation of the pilot programme of health insurance coverage. According to the results of the evaluation, carried out by the Institute of Health Information and Statistics of the Czech Republic, this care will either be acknowledged as a generally available and covered service in the whole country or the issue of dying in home environment will suffer a substantial loss.

The main objective of direct care services for 2016 is to verify how last year's new trends work in continuous operation, be it child patients or shared care. We will do our best to further develop our support team and find an efficient and workable model for families with children. We also plan to organize support groups for families who have lost a child. A long-term goal is to maintain the capacity of our multidisciplinary team and to continue being able to timely admit those who ask for our services. We would also like to work on the possibilities we provide to those whom we cannot accept: outpatient care, consultant, respite care, counselling.

We plan to set up a group of lecturers who would help tackle the issues of palliative care at debates, commentated screenings, lectures and other educational events.

We also have an unfinished business from last year – a construction permit procedure concerning a house in the Michle district of Prague that should become a palliative centre including direct care facilities as well as teaching capacities for the training of professionals in palliative care.

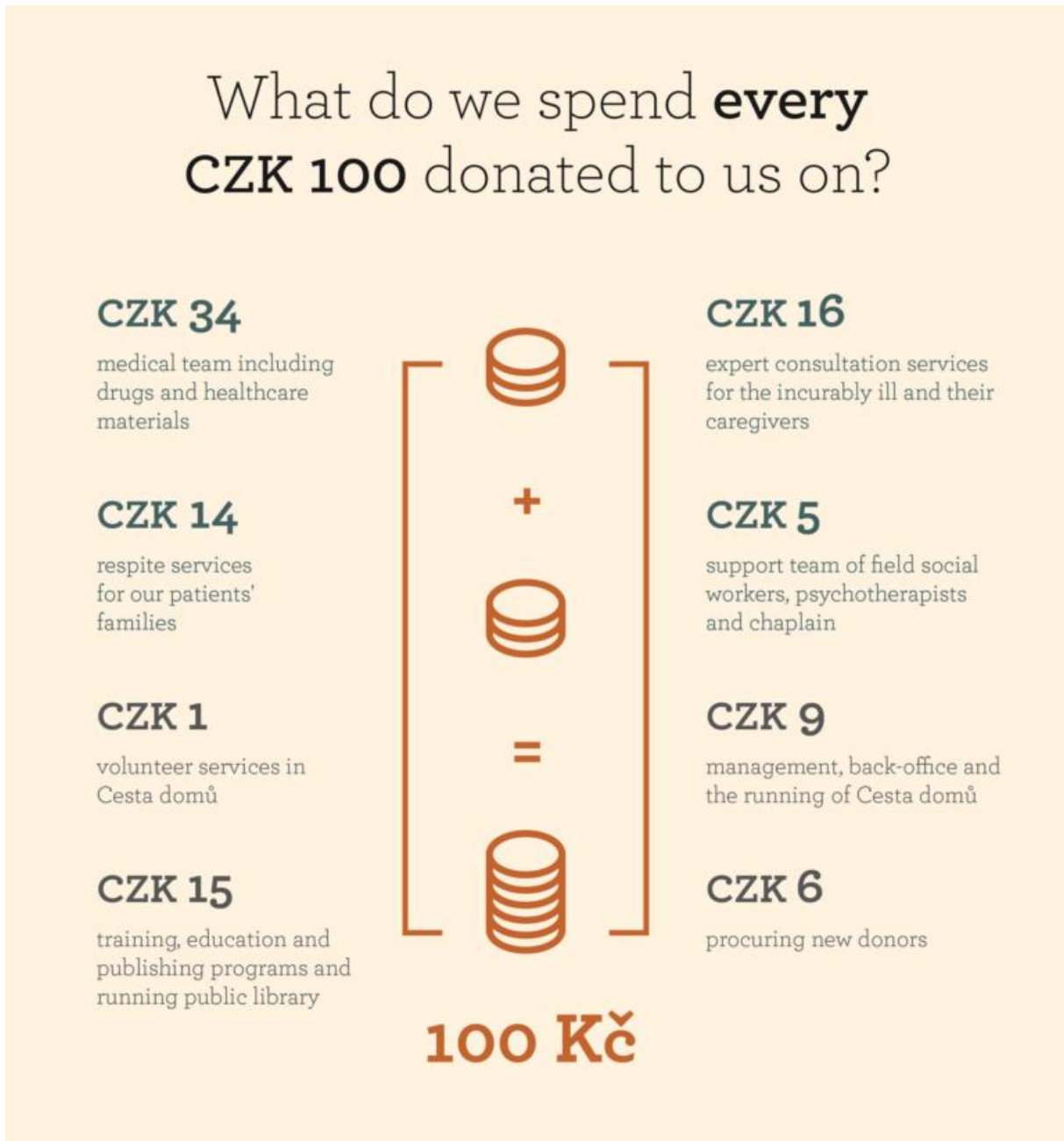
ECONOMIC PERFORMANCE IN 2015

REVENUES (in CZK)	
Services and goods sold	3,539,000
Donations (incl. funds)	13,823,000
Subsidies	8,966,000
Other revenues	440,000
Total	26,371,000

EXPENSES (in CZK)	
Materials	2,610,000
Maintenance, gas, electricity etc.	5,409,000
Labour expenses	16,578,000
Other expenses	1,885,000
Total	26,482,000

The audit reports for the year of 2015 were conducted by the company AUDIT SERVIS, spol. s r.o. The auditor's opinion is unqualified.

The full version of the Annual Report including our Financial Statements is available for download on our website.



When drafting our budget for the next year, we created an intelligible picture showing how we use every hundred crowns that were donated to us.

SELECTED PROJECTS IN 2015

- The support for systematic processing of documents for negotiations with insurance companies (Komerční banka's Jistota foundation): The project resulted in a study comparing the organizational and coverage models of mobile palliative care in EU countries. The study was presented on 8 December at the opening of an exhibition on palliative care which took place in the Senate of the Parliament of the Czech Republic under the auspices of Senator Václav Hampl.
- Advance healthcare directives – how to state them correctly? (Ministry of Labour and Social Affairs of the Czech Republic): The aim of the project was to make the expert and layman public, especially senior citizens, aware of the possibility to write down advance healthcare directives. Training courses on this subject were offered in four regions of the Czech Republic during the year. The highlight of the project was a conference for professionals which took place on 24 June, 2015 in Prague.
- Raising public awareness about care options and rights of people at the end of life (The Czech NGO Programme and the Civic Society Development Foundation): The project was aimed at raising public awareness of dignity at the end of life and the rights of the dying. The objectives of the project were achieved by educating physicians and medical staff, publishing and distributing new information materials, extending services offered by our advisory centre, supporting new initiatives in different regions and encouraging local authorities to contribute to the debate.

ASSOCIATIVE BODIES OF CESTA DOMŮ

Association Board in 2015

Akad. mal. Martina Špinková

Association Chair

Mgr. Václava Bratinková

Association Vice-Chair

Prof. RNDr. Milan Kodíček, CSc.

Association Vice-Chair

Doc. MUDr. Štěpán Špinka, Ph.D.

Association Vice-Chair

RNDr. Josef Basík

Mons. ThLic. Tomáš Holub, Th.D.

Ing. Richard Kaucký

Mgr. Ondřej Krása

JUDr. Rostislav Silný

Members of the association do not receive any reward for their work and all their activities are voluntary.

PEOPLE OF CESTA DOMŮ IN 2015

As of 31 December 2015, Cesta domů had 39 employees, amounting to a total of 33.91 FTEs including agreements. Direct care made up for 20.61 FTEs, educational programmes for the public, work with donors, library and administration for 13.3 FTEs.

In 2015, Cesta domů worked under the leadership of:

Marek Uhlíř

Director

Irena Závadová

Senior Consultant

Martina Pojarová

Service Manager

Tomáš Matocha

Finance Director

Vojtěch Kozlík

Public Events Manager, Managing Director of the service organization ProCestu s.r.o

Following people worked for Cesta domů in 2015:

Mára Adamců, Otto Adamec, Ludmila Bělohradská, Lucie Bezděková, Alice Bílková, Tetyana Bilyak, Tereza Bímová, Juliána Bindášová, Tomáš Blažke, Ludmila Böhmová, Kateřina Bransburg, Hana Brožová, Markéta Čábelová, Jiří Černý, Daniela Eiseltová, Kristína Faklová, Zuzana Francová, Zuzana Hájková, Petra Hálková, Oldřich Hanibal, Olga Havlínová, Jakub Hein, Adam Houska, Václav Chytil, Kateřina Janoušková, Jana Janžurová, Zdeněk Kalvach, Tereza Kaucká, Marie Kazmarová, Pavel Klimeš, Marie Klimešová, Mlada Komárková, Jan Kořenek, Mikuláš Kosák, Michal Kouba, Helena Krejčíková, Anna Krutská, Jiří Kučera, Alexandra Lammelová, Martin Loučka, Tereza Lužná, Jaromír Matějek, Andrea Matoušková, Kateřina Menčíková, Mahulena Mojžíšová, Anežka Moravcová, Ondřej Nezbeda, Veronika Němcová, Judita Němcová, Ludmila Nohýnková, Magdalena Pehalová, Ilona Peňasová, Ivana Pičmanová, Karolína Pochmanová, Pavel Pokorný, Jindřich Polívka, Libuše Proboštová, Jindřiška Prokopová, Lucie Přádová, Leonardo Ragusa, Petra Rendlová, Michaela Růtová, Štěpánka Ryšavá, František Řezáč, Tereza Řezáčová, Barbora Slavíčková, Olga Steinertová, Olga Stránská, Barbora Szonowská, Nikola Ševčíková, Alžběta Šimčíková, Štěpánka Škampová, Jitka Špičánová, Tereza Špinková, Martina Špinková, Alena Štěpánová, Helena Štohanzlová, Pavel Šuchman, Alžběta Těšitelová, Lucie Trpíková, Kateřina Tulachová, Jana Valjentová, Libor Vaněk, Martina Vaňková Dvořáková, Katarína Vlčková, Pavla Vopatová, Jan Vrátný, Kateřina Židů...

...and many other people of various professions who worked for us as freelancers or volunteers.

COOPERATION

A L S , s r.o., ABC MAGNET s. r. o., ACI-AUTO COMPONENTS INTERNATIONAL, s. r. o., ACTIVE 24, s. r. o., add egg s. r. o., Advis Consulting s. r. o., AFUK, AGILAB group s. r. o., ALBERTINA Trading, spol. s r.o., ALBI Česká republika a. s., Alfix ČR s. r. o., Alza.cz a. s., ANECT a. s., ARTIN Solutions s. r. o., ATOM RAT s. r. o., AUTO STYL a. s., AVAST Software a. s., Bärenreiter Praha s. r. o., Blueberry.cz Apps s. r. o., BNSOFT s. r. o., bnt attorneys-at-law s. r. o., BON JOUR ILLUMINATION, s. r. o., CARUN PHARMACY s. r. o., CCS Česká společnost pro platební karty s. r. o., CENTRUM DOHODY, s. r. o., Citibank Europe plc, organizační složka, CLINUVEL s. r. o., Coca-Cola HBC Česká republika, s. r. o., Coffee Source s. r. o., ComAp, a. s., CPP Development, s. r. o., CRYSTALITE BOHEMIA s. r. o., Czech Irish Business and Cultural Association, ČEPS, a. s., Česká spořitelna, a. s., Československá obchodní banka, a. s., D.U.K. H&C s. r. o., Daňová kancelář Macková, s. r. o., Diplomatic Spouses' Association o. s., Dobrobazar Čestlice, DRFG a. s., Druhý sbor ČCE v Praze 3 Žižkově, Economia, a. s., eNovation s. r. o., EPIMEX spol. s r.o., Eppendorf Czech & Slovakia s. r. o., Erhartova cukrárna, EUROKARDIO, s. r. o., European Arts Investments s. r. o., European GSA, Ewing Public Relations, s. r. o., Explore Productions, s. r. o., FABIÁN – BRDY, občanské sdružení, Farma Kozárovice s. r. o., Fatra, a. s., FBE Praha, s. r. o., Fórum dárců, GEA Process Engineering s. r. o., Givt.cz, GOLD PRALINES s. r. o., GT ATELIÉR GEODÉZIE, spol. s r.o., Gymnázium Arabská, Hájek a Boušová, spol. s r.o., HEIM 68, a. s., Hudební televize, s. r. o., Hypnosis, s. r. o., Cheecup s. r. o., CHODOV TOUR s. r. o., IDS Media CZ s. r. o., IMMUNIA spol. s r.o., INNA s. r. o., Internet Info, s. r. o., INVENTI SOLUTION, s. r. o., INVESTKONSULT, spol. s r.o., IPSOS s. r. o., J.O.D.Dvořákovi s. r. o., JAVLIN, a. s., JH Orto s. r. o., JCH ART AGENCY PRAGUE s. r. o., JK Machinery, s. r. o., JpSoft s. r. o., Kardiologie pro děti a dorost, s. r. o., KPMG Česká republika, s. r. o., La Fabrika, LÁBUS AA – Architektonický ateliér, s. r. o., Laděk, občanské sdružení, Lauderova škola v Praze, LEKIN s. r. o., Liga proti rakovině Praha, Linva s. r. o., M.A.R.S., s. r. o., Magistrát hlavního města Prahy, manGoweb, s. r. o., MARIMEDIC s. r. o., Medali s. r. o., Medastra s. r. o., MEDESA s. r. o., MEDIAN, s. r. o., MEDIATE s. r. o., MEGABOOKS CZ, spol. s r.o., Městská část Praha 1, 2, 3, 4, 6, 7, 8, 9, 10, 11, 12, 13, Ministerstvo práce a sociálních věcí ČR, Ministerstvo zdravotnictví ČR, MINOL a. s., MKS Research, s. r. o., Modela, spol. s r.o., Motus o. s., MUDr. Youngová & spol., s. r. o., NADACE AGEL, Nadace České spořitelny, Nadace ČEZ, Nadace Dětský mozek, Nadace Divoké husy, Nadace Charty 77, Nadace Komerční banky a. s. – Jistota, Nadace rozvoje občanské společnosti, Nadace Vodafone Česká republika, Nadační fond AVAST, Nadační fond obětem holocaustu, NET4GAS, s. r. o., NEWTON Media, a. s., NOVATO spol. s r.o., Olympus Czech Group, s. r. o., člen koncernu, PARKHOTEL Praha s. r. o., Plamienok, n.o., Plzeňský Prazdroj, a. s., PORTÁL, s. r. o., Pražská paroplavební společnost, a. s., PREVENCE, Profinit, s. r. o., Program švýcarsko-české spolupráce, R & B Mědílek s. r. o., Radioservis, a. s., Rámy pasparty s. r. o., RE/MAX Good Luck, ResAd, s. r. o., Retail Fashion s. r. o., RETRY s. r. o., RYOR a. s., Řízení letového provozu České republiky, státní podnik, Scrumage s. r. o., Secret of Raw s. r. o., Siemens, s. r. o., Space4kids s. r. o., STEM s. r. o., STEM/MARK, a. s., Suchdolští ochotníci, SYXT 4 s. r. o., Štědrý nákup, Tarsago Česká republika, s. r. o., Teva Pharmaceuticals CR, s. r. o., The Prague Concert Co., s. r. o., Tiskárna Flora s. r. o., ULURU spol. s. r. o., Umělecká skupina LACUS MORTIS, ÚVT, s. r. o., Václav Čížek s. r. o., Vinařství Kubík, VINO HORT s. r. o., VIZUS.CZ s. r. o., VOHOZ, Volkswagen Financial Services, Výbor dobré vůle-Nadace Olgy Havlové, W.A.G. payment solutions, a. s.

REGISTERED OFFICE AND CONTACTS

Cesta domů, z.ú.

info@cestadomu.cz

www.cestadomu.cz

IČ: 265 28 843

Office Address

Bubenská 3, 170 00 Praha 7

Medical Facility, Counselling Office, Client Admission, Respite Services

Boleslavská 16, Praha 3 / Phone 283 850 949, 775 166 863

Medical Equipment Rental

Boleslavská 12, Praha 3 / Phone 775 556 925

Library, Offices

Boleslavská 16, Praha 3 / Phone 266 712 610

Charity Shops

Bubenská 3, 170 00 Praha 7 / Phone 777 702 463

Bělohorská 90, 160 00 Praha 6 / Phone 736 139 330

Bank Details

Account number: 2800193970/2010, Fio banka, a. s., V Celnici 1028/10, Praha 1

If you want to send us a one-time gift, use the variable symbol 357. Thank you very much!

Websites run by Cesta domů:

www.cestadomu.cz

www.facebook.com/cestadomu

www.umirani.cz – information, discussion and advisory portal

vzpominky.nezavirejteoci.cz – virtual memorial site

nakladatelstvi.cestadomu.cz – Cesta domů publishing house

eshop.cestadomu.cz – Cesta domů charity shop

knihovna.cestadomu.cz – Cesta domů library